



Estimating Water Use in El Paso County Texas Based on GIS and Remote Sensing Imagery

Jiao Wang, Nate Currit
Texas State University-San Marcos
May 6, 2009

INTRODUCTION



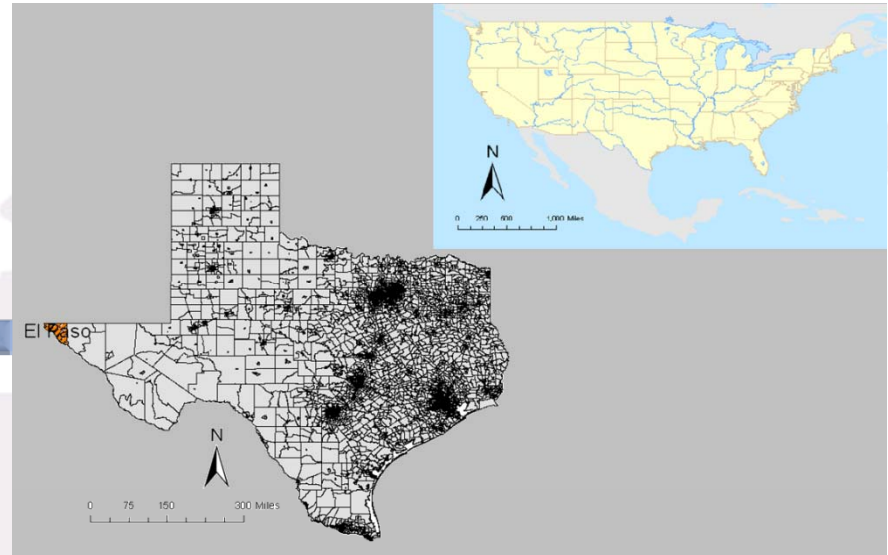
- Background
- Current water resource
- Concern







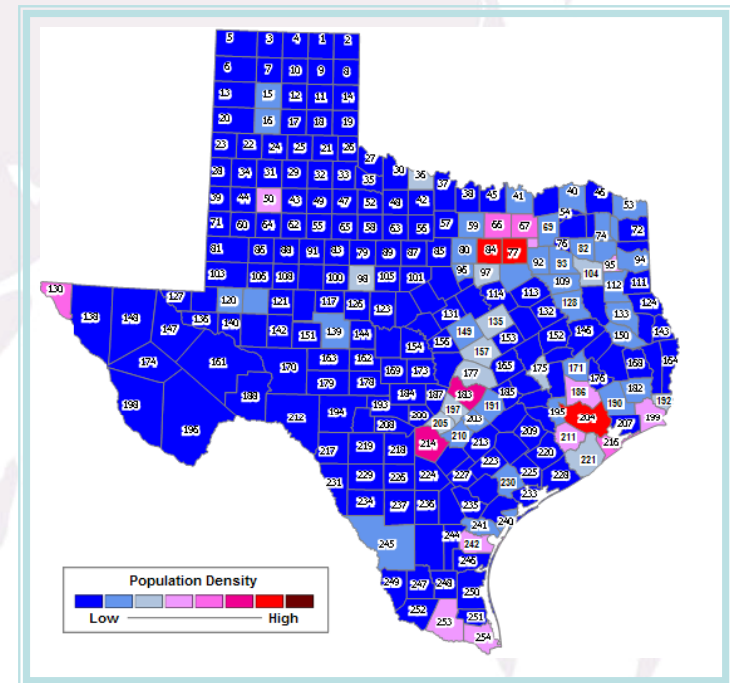
Study Site



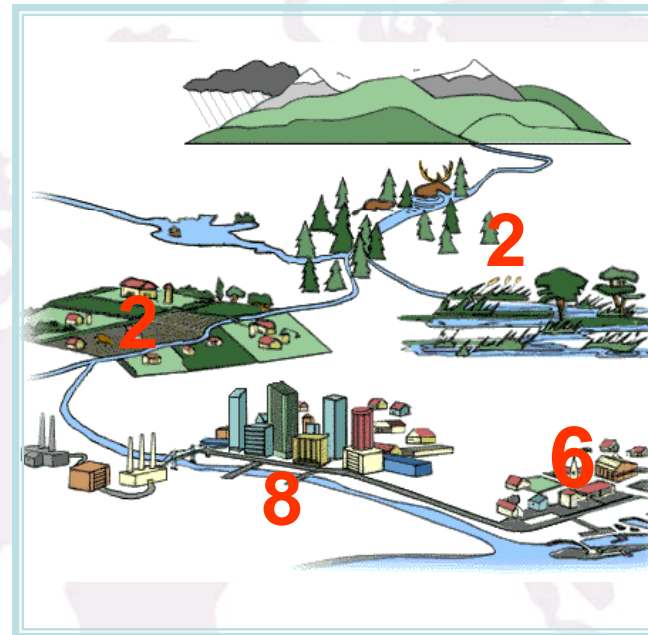
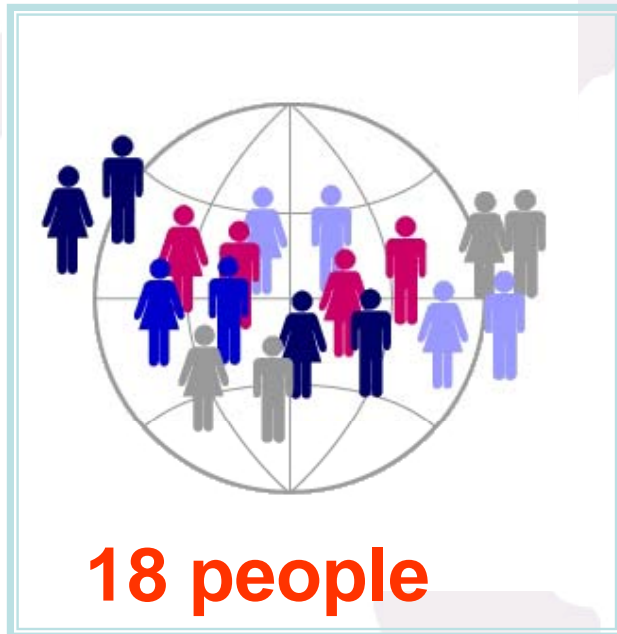
Methodology



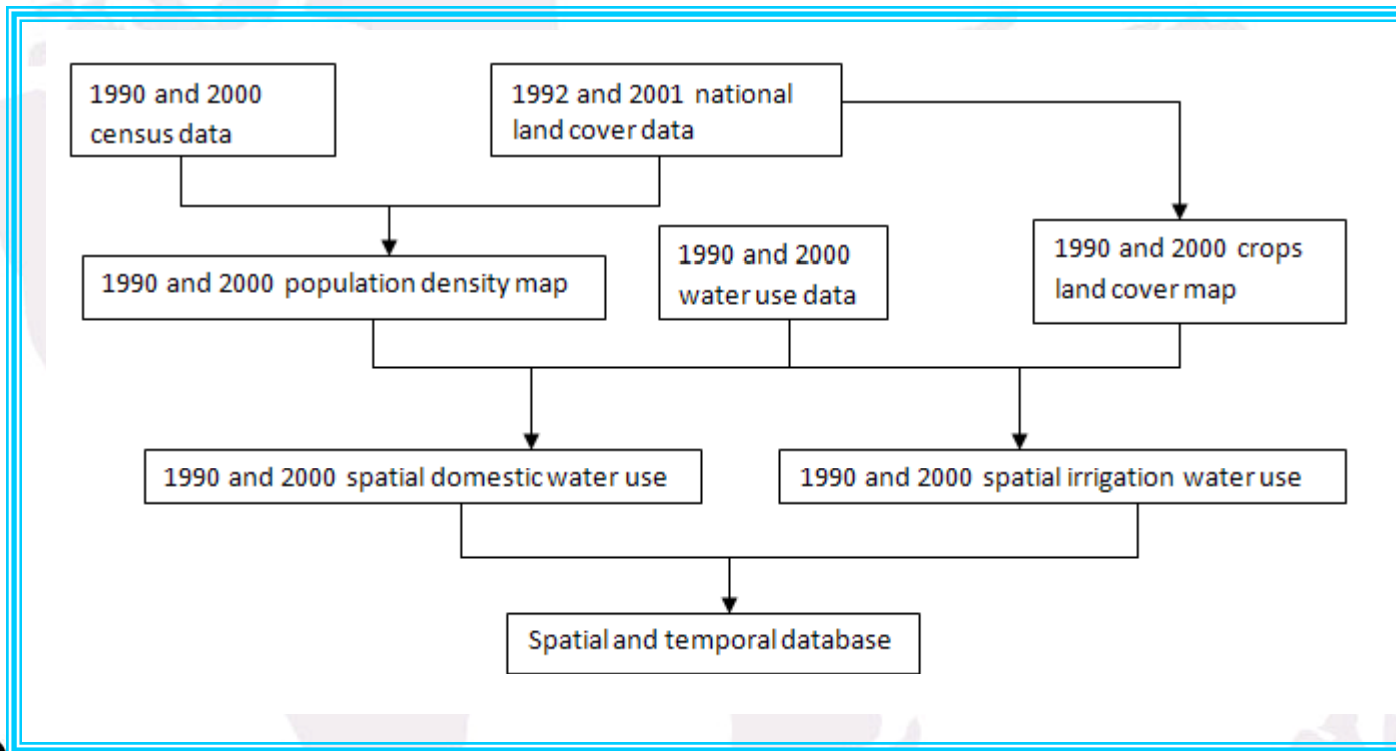
- Key to domestic water use
- Traditional form
 - choropleth map
 - limitations



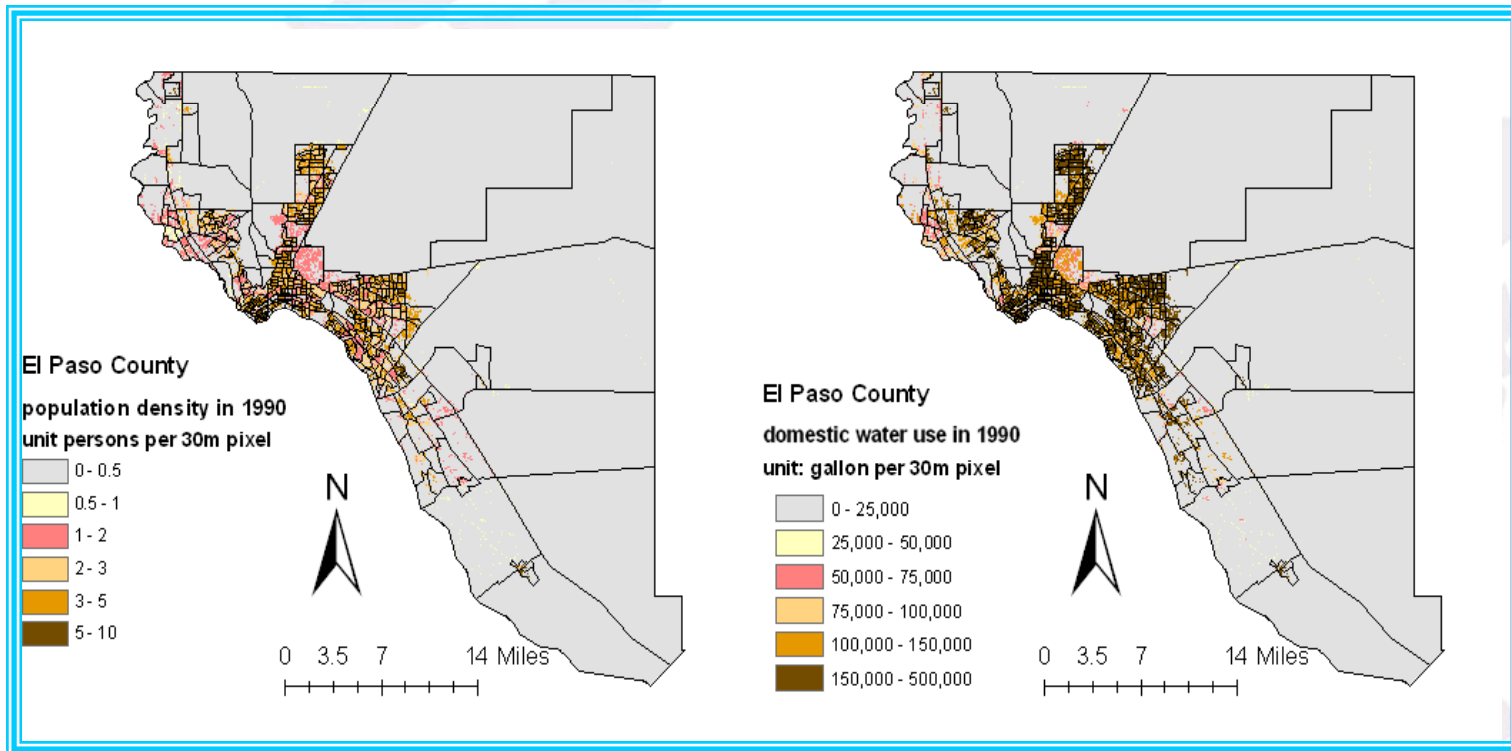
Dasymetric Mapping



Data and Workflow



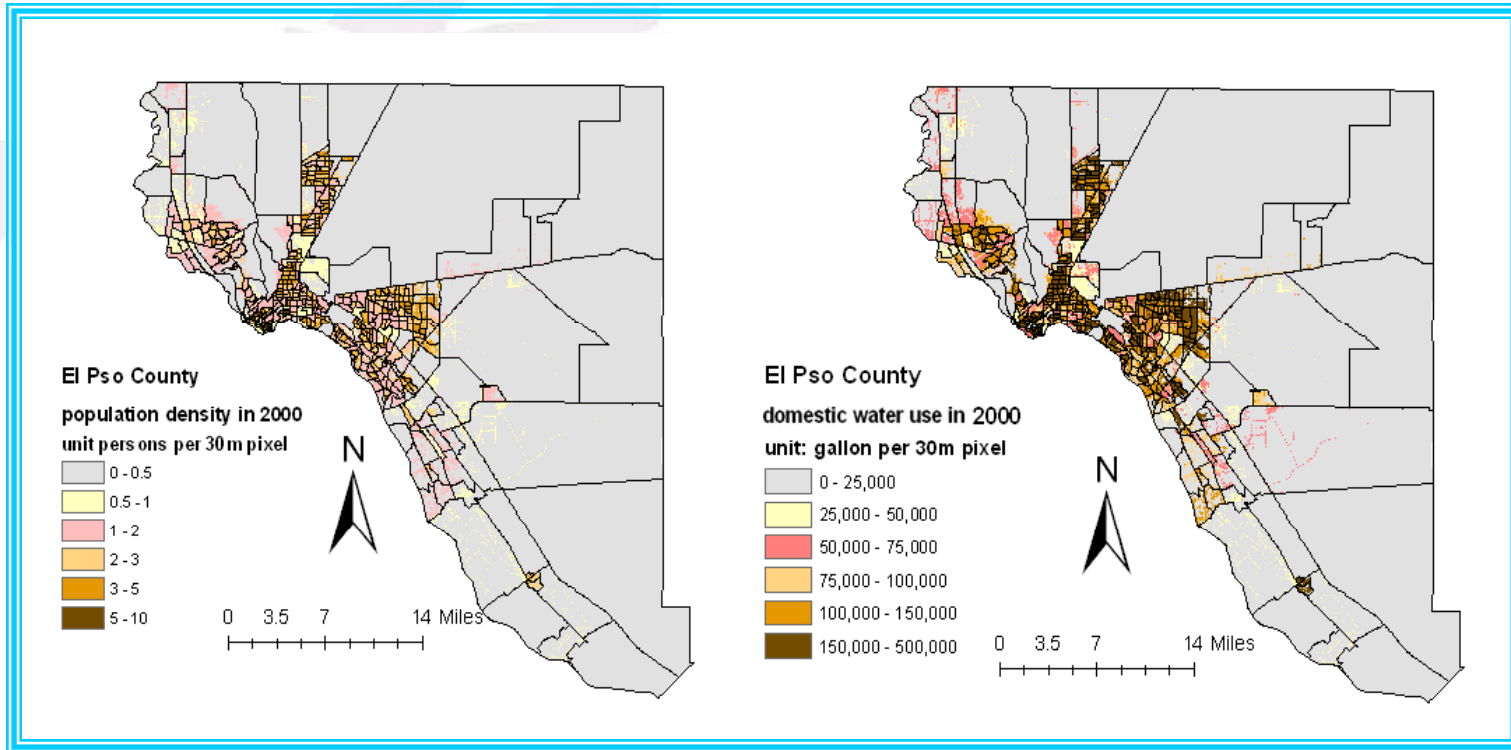
Results



Population distribution and domestic water use of El Paso County in 1990



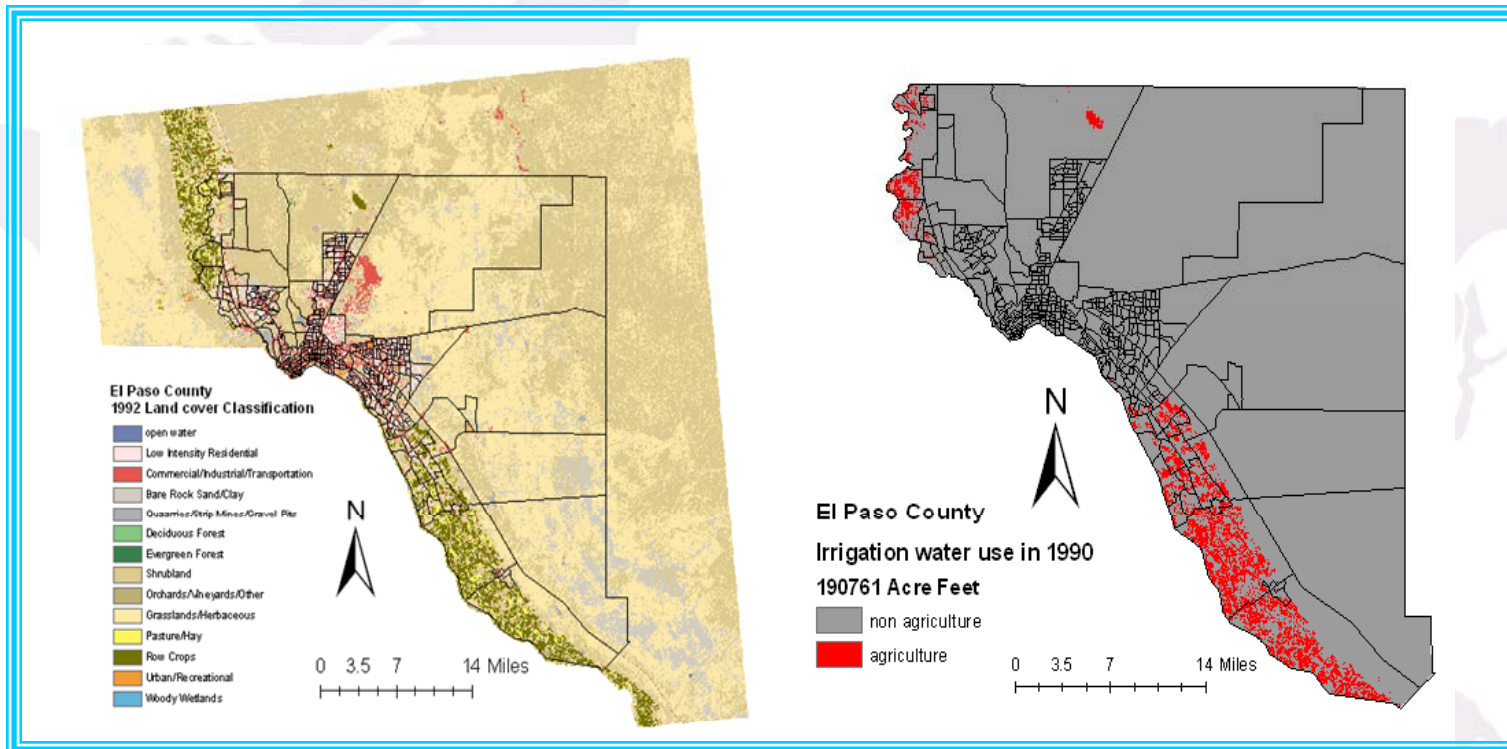
Results-continued



Population distribution and domestic water use
of El Paso County in 2000



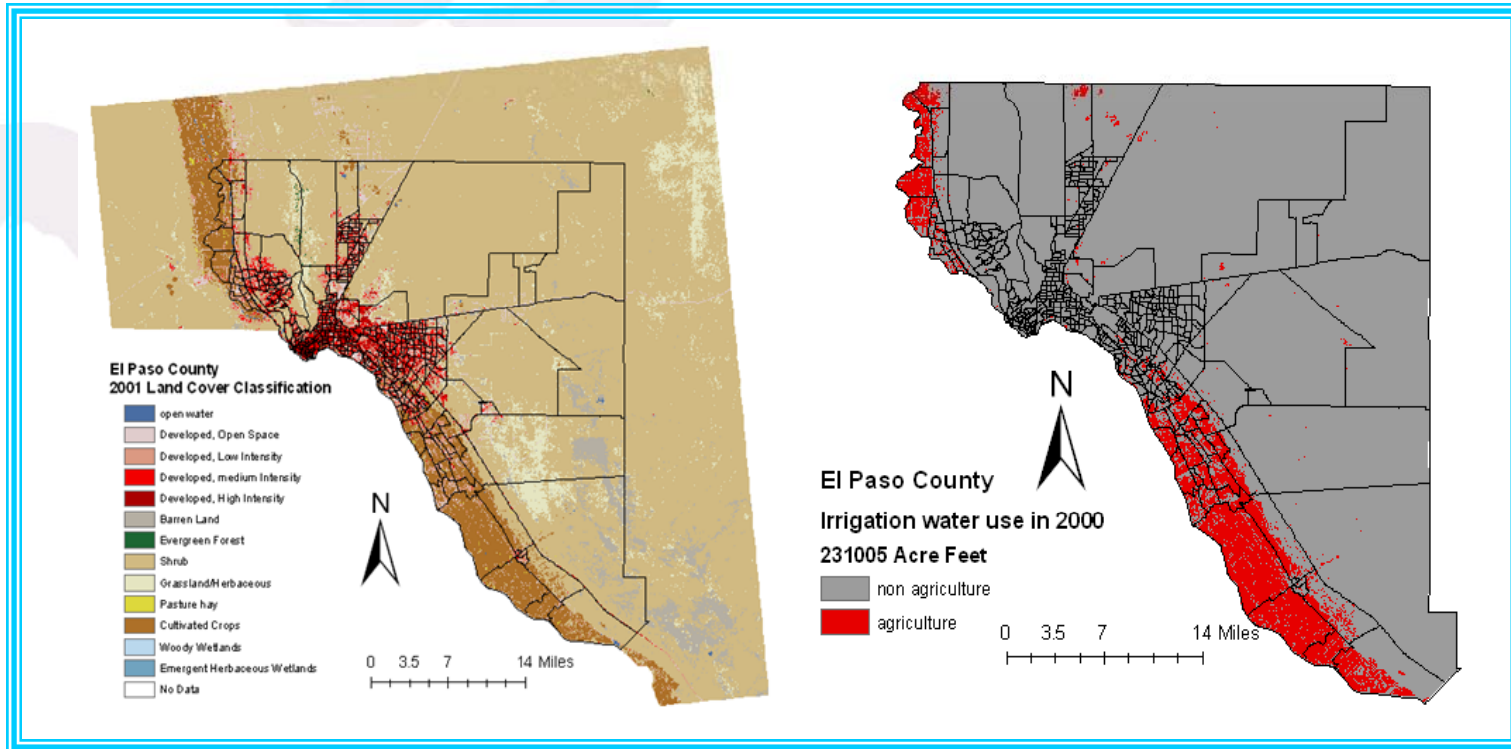
Results-continued



Land cover classification and irrigation water use in 1990



Results-continued



Land cover classification and irrigation water use in 2000

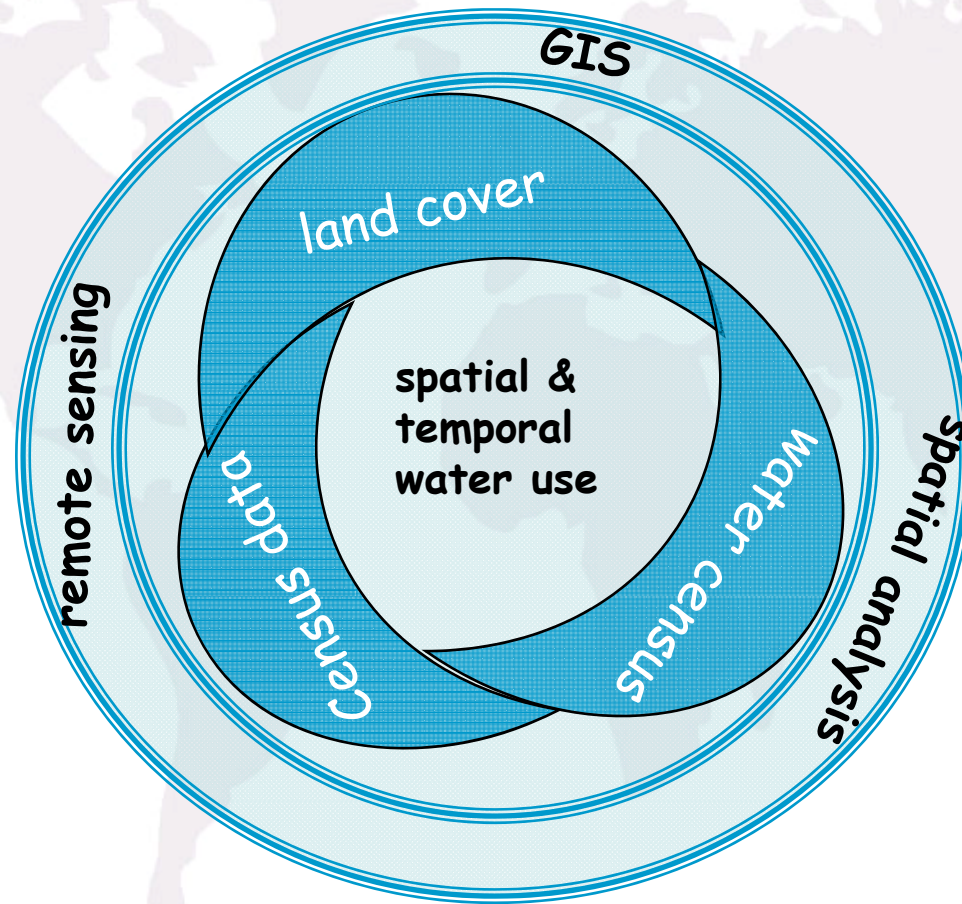


Discussion



- Population growth
- Domestic water use drop
- Agriculture land growth
- Irrigation water use drop

Conclusion



Thank you !

